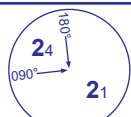
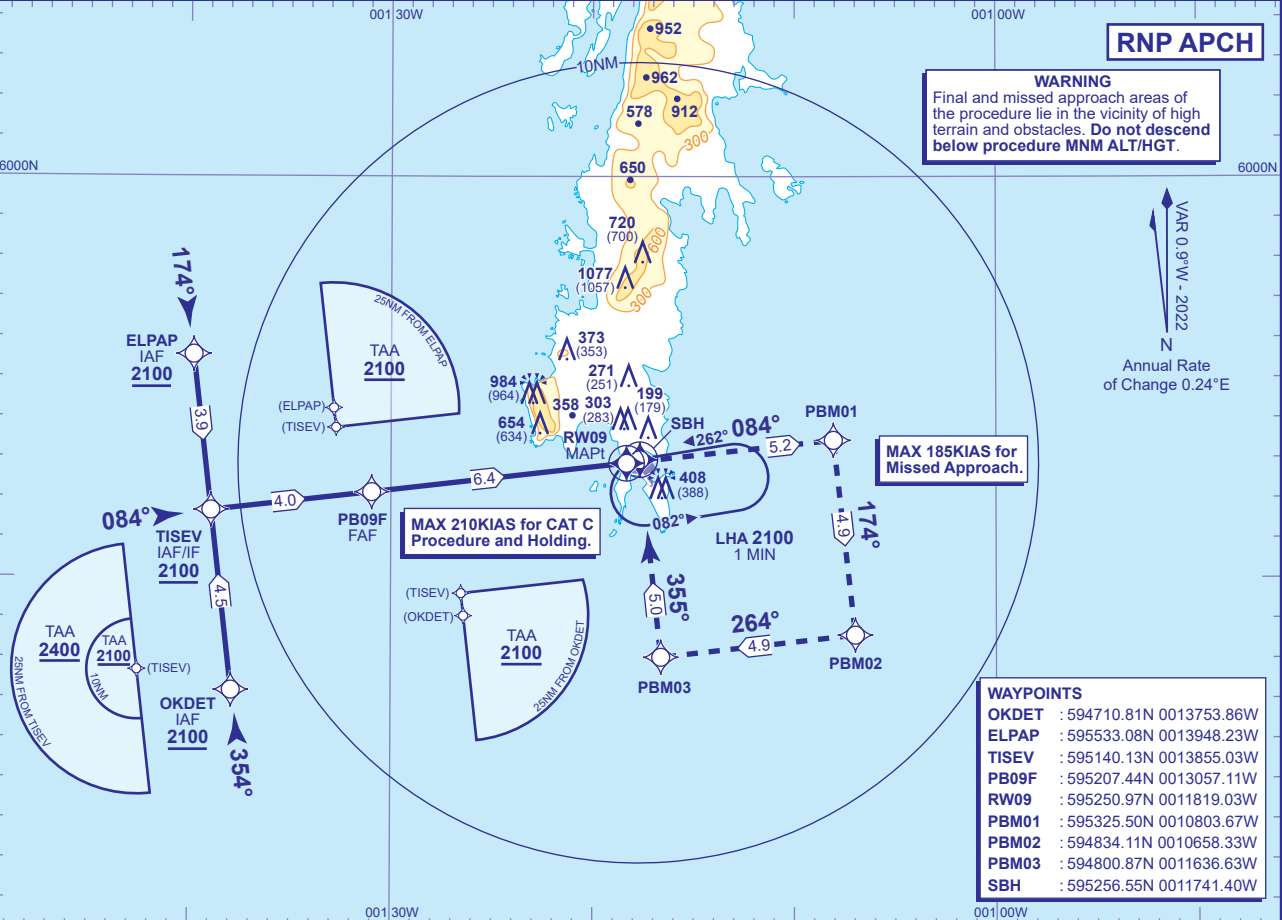


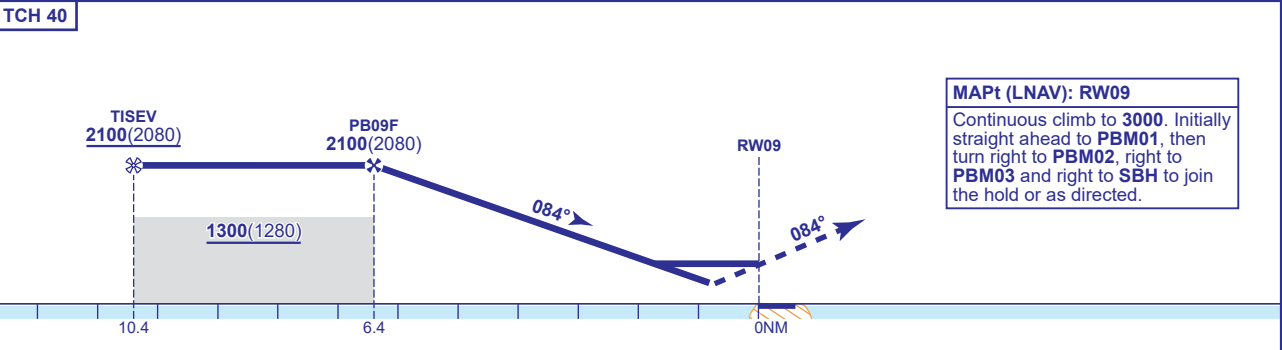
INSTRUMENT APPROACH CHART - ICAO

SUMBURGH
RNP
RWY 09
(ACFT CAT A,B,C)

 MSA 25NM ARP	TWR 118.255	SUMBURGH TOWER	AD ELEVATION 21
	RAD 131.300, 123.155	SUMBURGH RADAR	THR ELEVATION 20
	ATIS 125.855	SUMBURGH INFORMATION	OBSTACLE ELEVATION 1077 AMSL (1057) (ABOVE THR)
	AFIS 118.255	SUMBURGH INFORMATION	BEARINGS ARE MAGNETIC
TRANSITION ALTITUDE 6000			



RECOMMENDED PROFILE Gradient 5.24%, 318FT /NM						
NM to RW09	6	5	4	3	2	1
ALT(HGT)	1970(1950)	1650(1630)	1330(1310)	1020(1000)	700(680)	380(360)



Aircraft Category		A	B	C	Rate of descent	G/S KT	160	140	120	100	80
OCA (OCH)	LNAV	630(610)	630(610)	630(610)		FT/MIN	850	740	640	530	420
VM(C)OCA (OCH AAL)	Total Area	800(779)	1200(1179)	1400(1379)							
	Restricted (See Note 1)	800(779)	800(779)	1130(1109)							

NOTE Reduced VM(C) minima applies to aircraft which manoeuvre outside the quadrant north of RWY 09/27 C/L and west of RWY 15/33 C/L.

CHANGE (12/21): EGNOS AND LPV REMOVED.